



# Unique Washroom Solutions for Caterers, Hoteliers & Licensees



**WASHROOM**  
ACCESSORIES



**DUDLEY**  
**INDUSTRIES**

SHEET METAL EXPERTISE SINCE 1942



# Unique Washroom Solutions

A five-star hygiene rating shouldn't stop at the kitchen. The condition of your washrooms will also form part of the guest experience, so it's important that your facilities make a strong first impression.

Achieving an appropriate sense of style, care and attention needn't be expensive. In fact, since routine checks, maintenance and replenishment typically account for the majority of 'whole lifecycle' costs of most washroom equipment, choosing robust, reliable and higher quality dispensers can actually save you money.

In this guide, we explore numerous important aspects of the washroom equipment selection process: design, capacity, material choice, use of space, safety issues and more.



# Cost-Reduction & Washroom Design



Staff time can be expensive, so anything you can do to minimise the need for regular checks and maintenance should help to improve your bottom line. In a washroom, one of the most recurrent requirements is to inspect dispensers; to check that they are working and that they are kept topped up with paper, gel, soap or other consumables.

The need for staff intervention can be minimised by choosing higher-capacity dispensers that don't need to be replenished so often. In general, for washrooms that see significant use, larger capacities will translate into larger savings on time and labour costs.

Similarly, buying a matching suite of dispensers should save time if you ask the supplier to ensure that they can all be opened using a single key. This makes regular checks easier and quicker. So too does choosing dispensers with user-friendly interiors; mechanisms that aren't fiddly or hard to access.

Routine replenishment will also take less time if consumables are stored in the washroom itself

rather than in a separate (and possibly distant) store-room. They can be kept in a locked cupboard – if such a facility exists – but, increasingly, washroom designers are choosing to install modular cabinets that both house the dispensers but also provide storage space.

**Finally, installing electric hand-dryers rather than paper towel dispensers can render a central waste bin unnecessary. That, in turn, can reduce the time and costs associated with checking and emptying waste.**





# Durability & Cost Savings

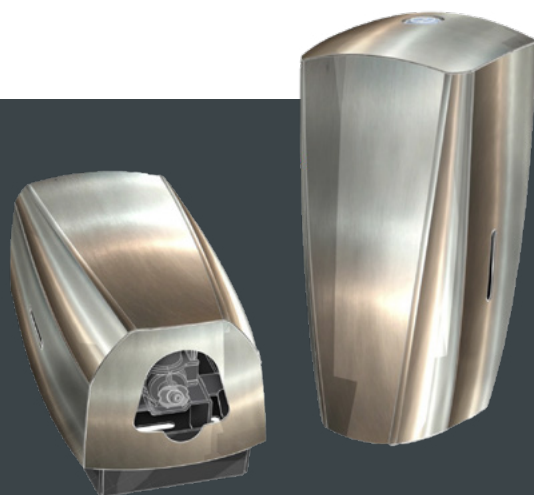


Repairs can be costly, but good design and the use of robust materials can go a long way towards eliminating those risks.

Stainless steel is an ideal material choice for dispensers that may be subject to heavy use and accidental damage. It will readily withstand scratches and everyday impacts – including knocks from guests with heavy bags – as well as deliberate acts of vandalism. Stainless steel is strong, hygienic and resistant to corrosion, it's also an excellent choice for any setting that has a rigorous cleaning regime in place.



Furthermore, steel casings are extremely resistant to wear, and they provide reliable protection for the inner mechanisms of washroom dispensers. Consequently, they should minimise the need for repairs or replacement, which might otherwise be both expensive and disruptive for your customers.

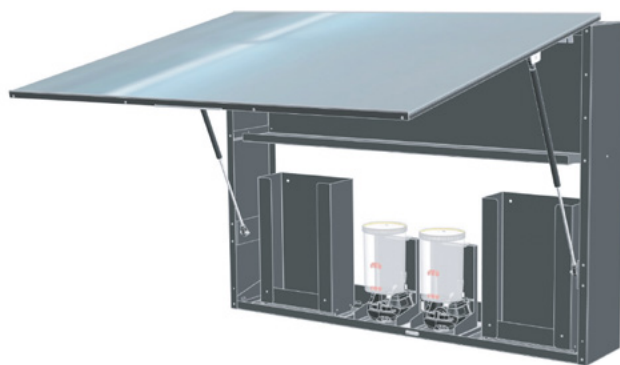


# Behind-the-Mirror Systems



As their names suggest, our Classic and Modulo Behind-the-Mirror systems place dispensers behind a mirror, so their mechanisms and contents remain fully protected from impact, dirt and tampering. The mirror locks securely in position but can be easily opened to provide staff quick access for re-stocking.

The Modulo range offers cabinets of various sizes and they can be fitted with a choice of dispensers to suit different settings. Importantly, they also include storage space for consumables.



Important advantages of these systems include:



A sleek, bright, minimalist appearance



Excellent durability



Convenient and easy access for staff

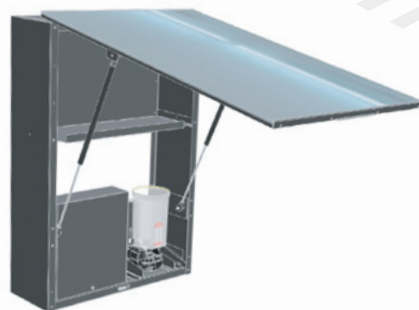
# Making Best Use of Space



Space is often at a premium in washrooms, so mounting dispensers in the 'dead space' above basins can be a good way to minimise obstructions and encourage efficient movement through the room. If this isn't possible, another way you can maximise your available floor space is to fit slimline dispensers that obtrude less into the room.

Our Behind-the-Mirror ranges are effective options for creating self-contained wash stations above each basin. When fitted with their own hand-dryers, they remove the need for a main waste bin, which might otherwise take up valuable space on the washroom floor. (They are not the only options, of course; a similar result can be achieved by installing separate dispensers and dryers over each basin.)

Self-contained wash stations provide important benefits in terms of safety, cost and user-flow through the room.



## For example:

- No need to queue to use separate dryers
- Less likelihood of bottlenecks and delays
- Less need for guests to crowd together (infection risk)
- Less risk of visitors dripping water on the floor from wet hands (slip risk)
- Less need for staff to spend time emptying bins and cleaning wet floors



# Other Practical Considerations



For hospitality businesses, every customer touch-point matters. Every aspect of your guest's experience will help shape their perceptions of your establishment and the quality of its services.

The condition of washrooms is an obvious indicator of how much care a business devotes to its customers. Clean, well-maintained facilities will certainly influence that overall impression, but there are subtler issues that can also contribute to a more pleasant visit.

For example, in hotels and similar residential premises, noise can be a problem, so although electric hand-dryers offer some advantages in terms of space and maintenance costs, a paper

towel dispenser might be a better, quieter choice if the washroom is set close to guest rooms.

The visual aspects of the design are also important, of course. Stainless steel dispensers can be produced in a host of different styles to suit your particular brand aesthetic: classic or contemporary; curved or angled. They also offer a choice of finishes: brushed, clear-lacquered or powder-coated.

**Whatever you choose, consistency is important. Choosing all your washroom equipment from the same supplier – in the same materials and with the same colour and finish – will help to ensure that each item works well as part of a single, coherent design.**



# Reflecting Other Brand Values

Most organisations are conscious of visual branding issues, and their washrooms often reflect these in terms of design and colour schemes. However, washrooms can also make more subtle statements about corporate responsibility; for example, your organisation's attitudes towards safety and sustainability.

Signage can be important in this respect: notices that offer advice on waste minimisation, water-use, inspection regimes, recycling policies and hand-hygiene.

However, the choice of materials and fittings can also speak volumes. For example, some modern hand-dryers are far more energy efficient than their older counterparts. Similarly, stainless steel has obvious benefits in terms of durability, but it can also be sourced from recycled stock and fully recycled again after use.



At Dudley Industries, sustainability is an important part of our company culture. Stainless Steel is made with at least **60% recycled content**, in a factory that uses **100% renewable energy** and that sends **zero waste to landfill**. Also at the end of its life time a stainless steel dispenser can be **100% recycled**.



**Such choices and statements won't be noticed by every user, but they all help your business to tell a consistent and credible story.**



# More Than Just Our Products



With decades of experience in the design and manufacture of stainless-steel washroom equipment, it's a given that we'll provide you with wholly reliable products. For your peace of mind, they are supported by warranties of up to 10 years.

However, our support goes much further than that. As designers and manufacturers, we know every last detail of our products, so you can count on us for:

- Specialist solutions for the hospitality sector
- Support and advice on specifications and positioning
- Complete product data
- Rapid and reliable delivery
- Dependable post-installation support



**NBS Source**

Manufacturer Partner

**bimobject**<sup>®</sup>

What's more, because we concentrate on making the dispensers rather than the consumables, our products don't tie you to a single supplier or to any restrictive contracts.



# Find Out More

For more information and advice about our washroom equipment or to discuss bespoke solutions for the hospitality sector, please contact our customer support team today.

**Sales:**

+44 (0)1253 738 311

**Email:**


[sales@dudleyindustries.com](mailto:sales@dudleyindustries.com)

**Web:**

[www.dudleyindustries.com](http://www.dudleyindustries.com)

---

Dudley Industries Ltd  
Preston Road  
Lytham-St-Annes  
Lancashire FY8 5AT

 **DUDLEY  
INDUSTRIES**  
SHEET METAL EXPERTISE SINCE 1942