

# Installation and User Guide

## Automatic Soap Dispensers

---

Applicable to product groups:

50310 Classic 1L Auto Soap Dispenser



## Thank you for choosing a Dudley Industries Soap Dispenser.

This dispenser is designed and manufactured by our team at our facilities based in Lancashire, UK. All our products are designed to withstand constant use in busy environments. Our Automatic Soap Dispensers are supported by a 10 year warranty provided they are installed and maintained correctly and not subject to any vandalism. Products must not be modified in any way as this will invalidate the warranty.

Please follow these instructions for safe installation and pass this document to the user for safe keeping.



## Safety Information

Please read these instructions thoroughly before installation and retain for future reference.

Remove all packaging and check contents for any damage prior to commencing installation. If there are any issues please contact our Customer Services Team on +44 (0) 1253 738311.

Before commencing installation and drilling into walls check that there are no hidden electrical cables or water pipes.

When using power tools always ensure you wear the correct PPE and operate following the manufacturer's instructions.

This dispenser should only be used for the type of soap specified, check outer box for details.

## Product Features

Brushed dispensers are manufactured from Stainless Steel.

White units are constructed from steel and powder coated.

Internal mechanisms are constructed from mixed materials.

All units (see product groups) are bulk fill/top up and suitable for your choice of formulation but always ensure the correct type is used i.e. liquid, foam or hand sanitiser.

All units are lockable to protect the contents and spare keys are available from Customer Services.

Automatic soap dispensers are operated by placing a hand underneath the unit which is detected by the infrared technology which then triggers the pump.

Fixing kits are included with all units.

## Installation

Following the guide for fixing; measure and mark the position of the fixing holes on the wall ensuring that they are level.

Drill holes in the wall using the appropriate size drill bit. Drill to the depth of the wall plug. If the surface is tiled, drill into the grout lines whenever possible. Insert the wall plugs supplied.

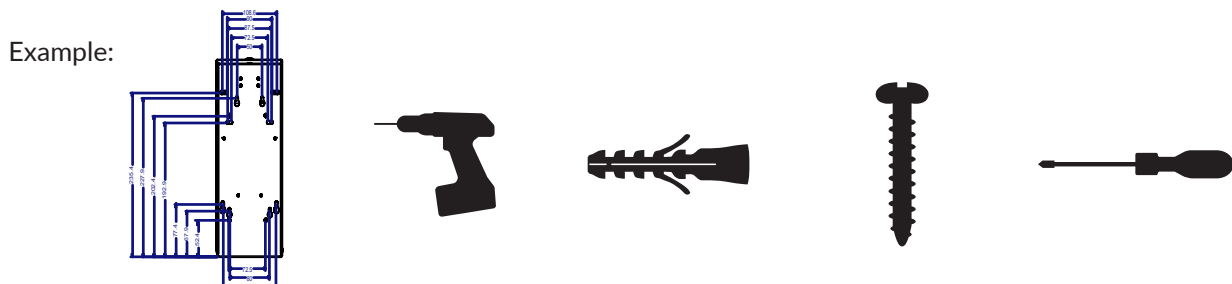
Open the dispenser, remove the reservoir if necessary and position the dispenser fixing holes over the wall holes made.

Insert the screws provided and tighten to secure the dispenser. We always recommend that you use all fixing holes available for strength and security.

Insert the batteries ensuring the correct positioning.

Replace any internal mechanisms and close the cover.

Trigger the infrared sensor multiple times and listen for the mechanism to work to ensure operation before filling with consumable.



## Filling and refilling

Unlock the cover and hinge open.

Lift the lid of the reservoir and fill with your choice of consumable ensuring it is correct for the type of pump supplied i.e. liquid, foam or hand sanitiser solutions.

Replace reservoir lid and close the cover ensuring the lock is engaged.

If new or empty, prime the dispenser by triggering the infrared sensor multiple times to ensure the formulation reaches the nozzle ready for dispensing.

## Fitting and replacing the batteries

The unit uses 4 x C Cell Alkaline Batteries, these are housed in the pump section of the dispenser.

Remove the reservoir and lift the pump out.

Remove the back cover to gain access to the battery compartment. Fit the batteries as per the image ensuring they are placed with positive and negative ends in the correct place.



## General Maintenance & Cleaning

### Brushed Stainless Steel Units:

Clean with warm water and a soft cloth, wipe in the same direction as the brushed grain. Dry thoroughly. DO NOT use soap, chemical cleaning detergents or abrasive cleaners.

### Powder Coated Units:

Clean with a mild detergent and soft cloth. Ensure any detergent is fully rinsed off prior to drying thoroughly.

## End of Life Disposal

All Dudley Industries units are manufactured to ensure longevity and a reliable life span. When a dispenser has reached its end of life it should be disposed of in a safe manner. Most components can be re-cycled in accordance with your local authority waste management policy.

### Battery Disposal

Batteries should not be disposed of in general waste. Please contact your local authority or waste contractor to ask about recycling options and disposal.

## Troubleshooting

### Soap not dispensing:

Check the reservoir to ensure soap is available.

Check that the batteries are operational.

Clean the nozzle with a soft warm cloth. (NEVER INSERT ANYTHING INTO THE NOZZLE)

Fill the reservoir with a small amount of warm water and trigger the pump to try and clear any soap build up.

### Pump motor not activating

Firstly replace the batteries.

Ensure the sensor is clean and nothing is obstructing its range.

### Soap is dispensed randomly without being triggered

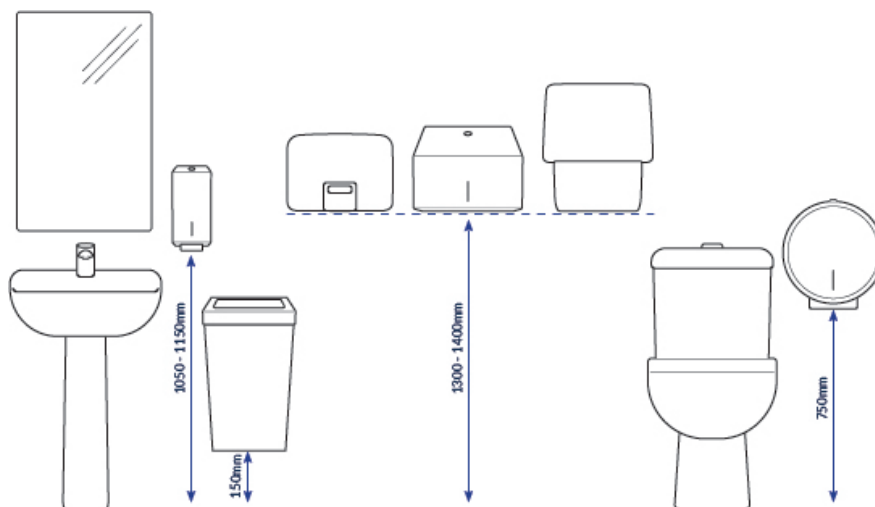
Sometimes reflective surfaces can trigger the sensor, for example highly polished counter tops or mirrors. Also high visibility clothing can trigger the sensor.

### Lost Key:

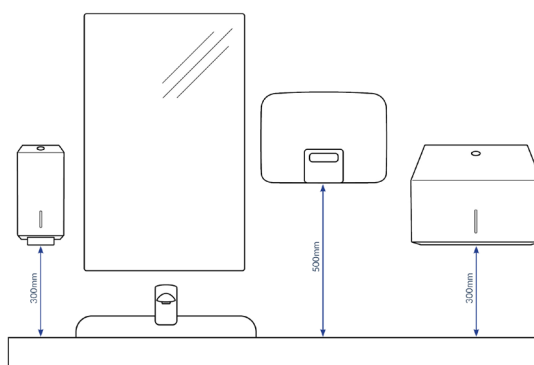
Spare keys can be purchased from our Customer Services Team call +44 (0) 1253 738311

## INSTALLATION HEIGHT GUIDE

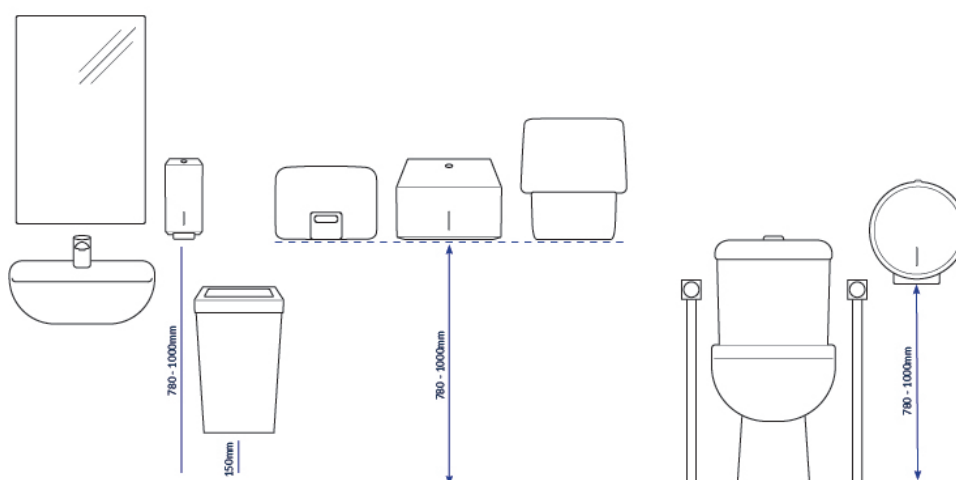
### General Washrooms:



### Above Counter:



### Accessible Washrooms:



**Dudley Industries Ltd**  
Preston Road, Lytham St Annes, Lancashire. FY8 5AT

**Tel:** +44 (0) 1253 738311  
**Email:** sales@dudleyindustries.com  
**Web:** www.dudleyindustries.com

