

Installation and User Guide

Manual Soaps and Hand Sanitiser Dispensers

Applicable to product groups:

50416	Classic 1L Foam Soap Dispenser
50412	Classic 1L Liquid Soap Dispenser
50417	Classic 1L Hand Sanitiser Dispenser
50440	Plasma 1L Soap Dispenser
50004/6	Platinum 375ml Soap Dispenser
50012/14/15/18	Platinum 1L Soap Dispenser
50012/18	Platinum Shower Gel Dispenser



Thank you for choosing a Dudley Industries Soap or Hand Sanitiser Dispenser.

This dispenser is designed and manufactured by our team at our facilities based in Lancashire, UK. All our products are designed to withstand constant use in busy environments. Our Manual Soap Dispensers and Hand Sanitisers are supported by a 10 year warranty provided they are installed and maintained correctly and not subject to any vandalism. Products must not be modified in any way as this will invalidate the warranty.

Please follow these instructions for safe installation and pass this document to the user for safe keeping.



Safety Information

Please read these instructions thoroughly before installation and retain for future reference.

Remove all packaging and check contents for any damage prior to commencing installation. If there are any issues please contact our Customer Services Team on +44 (0) 1253 738311.

Before commencing installation and drilling into walls check that there are no hidden electrical cables or water pipes.

When using power tools always ensure you wear the correct PPE and operate following the manufacturer's instructions.

This dispenser should only be used for the type of soap specified i.e. Liquid, Foam or Hand Sanitiser. Check outer box for details.

Product Features

Brushed and lacquered dispensers are manufactured from Stainless Steel.

White units are constructed from steel and powder coated.

Internal mechanisms are constructed from mixed materials.

All units (see product groups) are bulk fill/top up and suitable for your choice of formulation but always ensure the correct type is used i.e. liquid, foam or hand sanitiser.

All units are lockable to protect the contents and spare keys are available from Customer Services.

Soap dispensers are operated by pushing a button or the cover to dispense the soap, this is to reduce the pressure on wall fixings to ensure they remain safe and secure.

Fixing kits are included with all units.

Installation

Following the guide for fixing; measure and mark the position of the fixing holes on the wall ensuring that they are level.

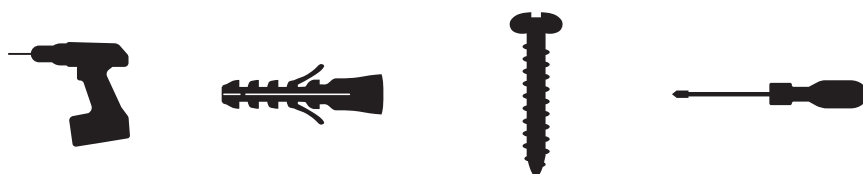
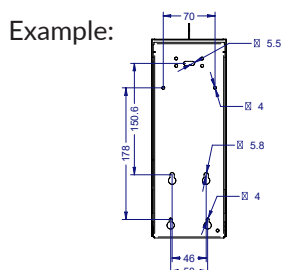
Drill holes in the wall using the appropriate size drill bit. Drill to the depth of the wall plug. If the surface is tiled, drill into the grout lines whenever possible. Insert the wall plugs supplied.

Open the dispenser, remove the reservoir if necessary and position the dispenser fixing holes over the wall holes made.

Insert the screws provided and tighten to secure the dispenser. We always recommend that you use all fixing holes available for strength and security.

Replace any internal mechanisms and close the cover.

Press the cover multiple times to ensure operation before filling with consumable.



Filling and refilling

Unlock the cover and hinge open.

Lift the lid of the reservoir and fill with your choice of consumable ensuring it is correct for the type of pump supplied i.e. liquid, foam or hand sanitiser solutions.

Replace the reservoir lid and close the cover ensuring the lock is engaged.

If new or empty, prime the dispenser by pressing the button or cover multiple times to ensure the formulation reaches the nozzle ready for dispensing.

General Maintenance & Cleaning

Brushed Stainless Steel Units:

Clean with warm water and a soft cloth, wipe in the same direction as the brushed grain. Dry thoroughly. DO NOT use soap, chemical cleaning detergents or abrasive cleaners.

Powder Coated & Lacquered Units:

Clean with a mild detergent and soft cloth. Ensure any detergent is fully rinsed off prior to drying thoroughly.

End of Life Disposal

All Dudley Industries units are manufactured to ensure longevity and a reliable life span. When a dispenser has reached its end of life it should be disposed of in a safe manner. Most components can be re-cycled in accordance with your local authority waste management policy.

Troubleshooting

Soap not dispensing:

- Check the reservoir to ensure soap is available.
- Clean the nozzle with a soft warm cloth (NEVER INSERT ANYTHING INTO THE NOZZLE).
- Fill the reservoir with a small amount of warm water and depress the nozzle to try and clear any soap build up.

Cover/Button won't depress:

- Open the cover and check that there is no debris blocking operation.
- Check to see if there is any damage which may be causing the fault.
- Check to see if installation is correct, i.e the dispenser is not skewed.

Lost Key:

- Spare keys can be purchased from our Customer Services Team call +44 (0) 1253 738311.

Correct Pump Guidance:

Different consumable formulations require different pumps

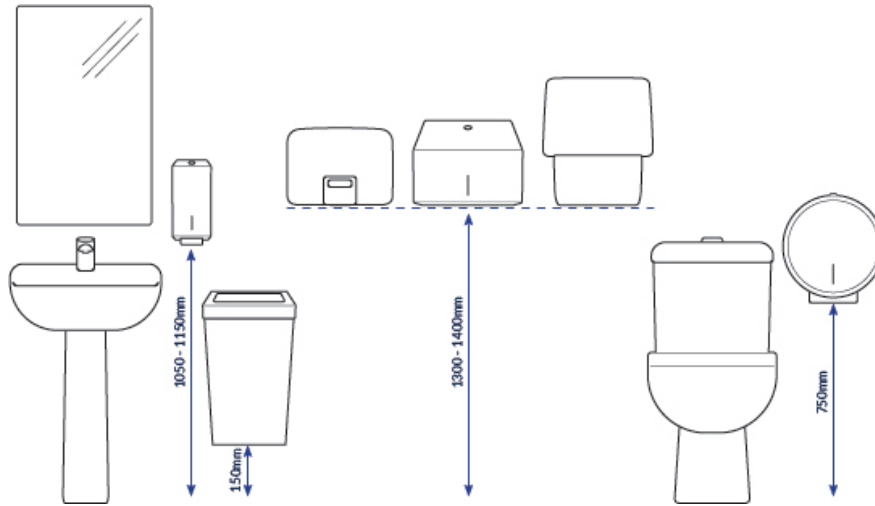
Always check that you are using the correct consumable for the pump in the dispenser.

- Foam soaps require a foam pump
- Liquid Soap and Gel Hand Sanitisers require a liquid / gel pump
- Liquid Hand Sanitisers (not gel) and toilet seat cleaners require a spray pump

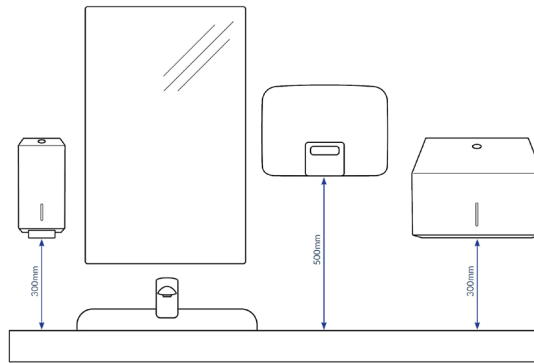
If unsure please call our customer services team on +44 (0) 1253 738311 who can advise.

INSTALLATION HEIGHT GUIDE

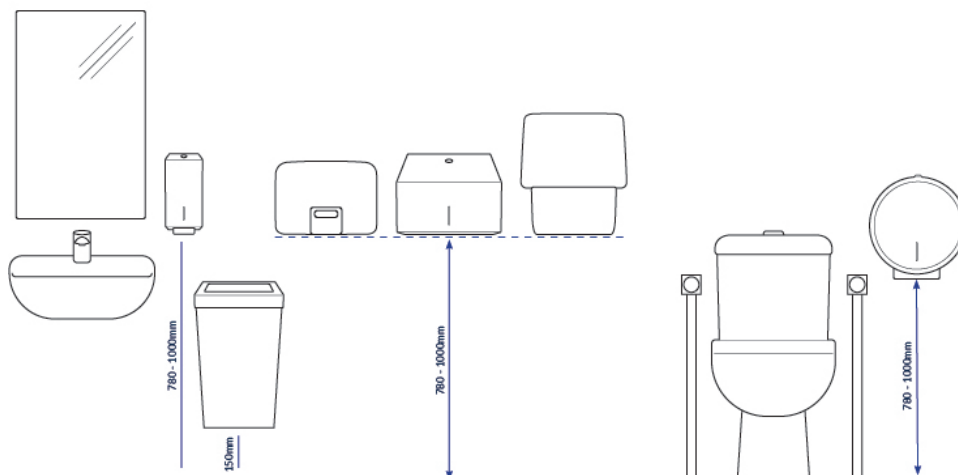
General Washrooms:



Above Counter:



Accessible Washrooms:



Dudley Industries Ltd
Preston Road, Lytham St Annes, Lancashire. FY8 5AT

Tel: +44 (0) 1253 738311
Email: sales@dudleyindustries.com
Web: www.dudleyindustries.com

