

Installation and User Guide

Paper Towel Dispensers

Applicable to product groups:

| | |
|---------|--|
| 78810 | Classic Paper Towel Dispenser - Small |
| 77127 | Classic Paper Towel Dispenser - Large |
| 78820 | Plasma Paper Towel Dispenser - Small |
| 78806 | Plasma Paper Towel Dispenser - Large |
| 77015CM | Platinum Paper Towel Dispenser - Small |
| 77017CM | Platinum Paper Towel Dispenser - Large |



Thank you for choosing a Dudley Industries Paper Towel Dispenser.

This dispenser is designed and manufactured by our team at our facilities based in Lancashire, UK. All our products are designed to withstand constant use in busy environments. Our Paper Towel Dispensers are supported by a 10 year warranty provided they are installed and maintained correctly and not subject to any vandalism. Products must not be modified in any way as this will invalidate the warranty.

Please follow these instructions for safe installation and pass this document to the user for safe keeping.



Safety Information

Please read these instructions thoroughly before installation and retain for future reference.

Remove all packaging and check contents for any damage prior to commencing installation. If there are any issues please contact our Customer Services Team on +44 (0) 1253 738311.

Before commencing installation and drilling into walls check that there are no hidden electrical cables or water pipes.

When using power tools always ensure you wear the correct PPE and operate following the manufacturer's instructions.

This dispenser should only be used for the type of paper towels specified, check outer box for details.

Product Features

Brushed and lacquered dispensers are manufactured from Stainless Steel.

White units are constructed from steel and powder coated.

Internal mechanisms are constructed from mixed materials.

All units are lockable to protect the contents and spare keys are available from Customer Services.

Paper towels are dispensed from the bottom of the unit.

Fixing kits are included with all units.

Installation

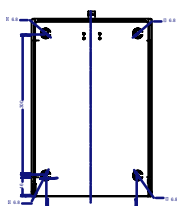
Following the guide for fixing; measure and mark the position of the fixing holes on the wall ensuring that they are level.

Drill holes in the wall using the appropriate size drill bit. Drill to the depth of the wall plug. If the surface is tiled, drill into the grout lines whenever possible. Insert the wall plugs supplied.

Open the dispenser and position the fixing holes over the wall holes made.

Insert the screws provided and tighten to secure the dispenser. We always recommend that you use all fixing holes available for strength and security.

Example:



Filling and refilling

Unlock the cover and hinge open.

Remove the paper sleeve from the paper towel pack (if there is one) and simply place the towels into the unit. Release the bottom towel so that it is visible below the unit. If towels are interleaved the next paper towel should always be visible to users.

Depending on the paper towel brand chosen small units will house one pack and large dispensers two packs.

General Maintenance & Cleaning

Brushed Stainless Steel Units:

Clean with warm water and a soft cloth, wipe in the same direction as the brushed grain. Dry thoroughly. **DO NOT** use soap, chemical cleaning detergents or abrasive cleaners.

Powder Coated & Lacquered Units:

Clean with a mild detergent and soft cloth. Ensure any detergent is fully rinsed off prior to drying thoroughly.

End of Life Disposal

All Dudley Industries units are manufactured to ensure longevity and a reliable life span. When a dispenser has reached its end of life it should be disposed of in a safe manner. Most components can be re-cycled in accordance with your local authority waste management policy.

Troubleshooting

Paper Towels not dispensing

Check that the correct size of paper towel is being used, if they are too large they may jam or too small and they may fall out.

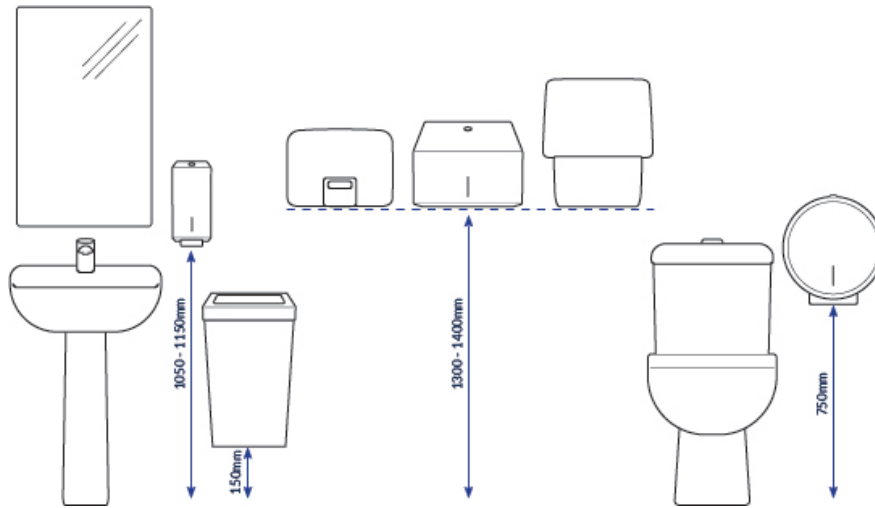
Check that the dispenser isn't overfilled. Squeezing in too many paper towels may cause a jam.

Lost Key:

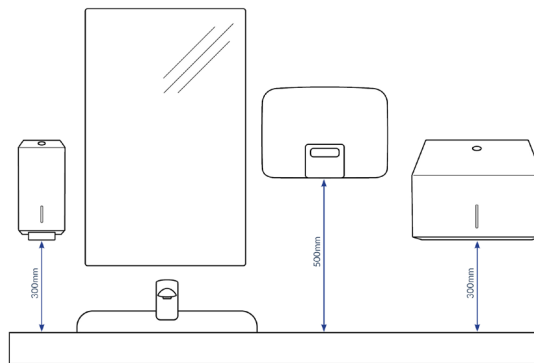
Spare keys can be purchased from our Customer Services Team call +44 (0) 1253 738311

INSTALLATION HEIGHT GUIDE

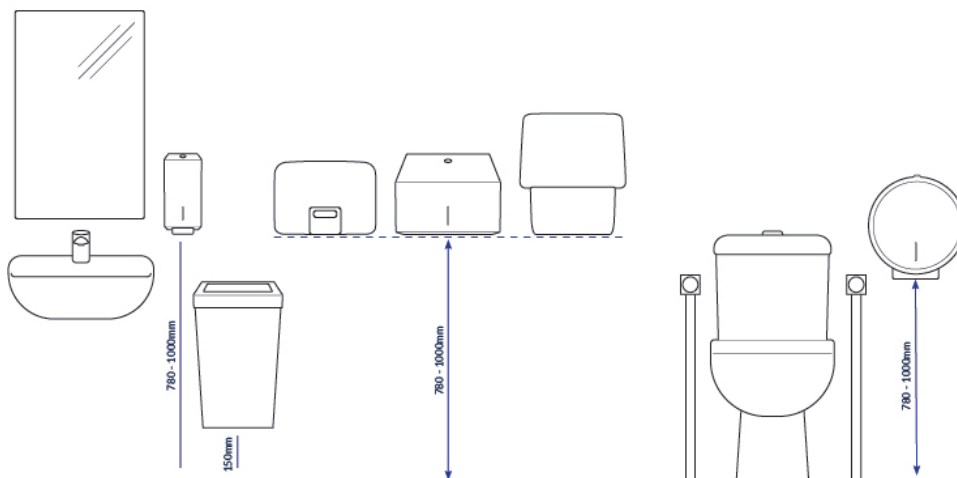
General Washrooms:



Above Counter:



Accessible Washrooms:



Dudley Industries Ltd
Preston Road, Lytham St Annes, Lancashire. FY8 5AT

Tel: +44 (0) 1253 738311
Email: sales@dudleyindustries.com
Web: www.dudleyindustries.com

