

Installation and User Guide

Waste Bins

Applicable to product groups:

78202SS	Classic 30L Tapered Waste Bin
78962SS	Classic 30L Lidded Waste Bin
78370SS/WH	Classic 30L Open Top Waste Bin
78210SS	Classic 50L Tapered Waste Bin
84530SS/WH	Classic 50 Lidded Waste Bin
77004CB	Platinum 14L Waste Bin
77020CB	Platinum 30L Waste Bin



Thank you for choosing a Dudley Industries Waste Bin.

This waste bin is designed and manufactured by our team at our facilities based in Lancashire, UK. All our products are designed to withstand constant use in busy environments. Our Waste Bins are supported by a 10 year warranty provided they are installed and maintained correctly and not subject to any vandalism. Products must not be modified in any way as this will invalidate the warranty.

Please follow these instructions for safe installation and pass this document to the user for safe keeping.



Safety Information

Please read these instructions thoroughly before installation and retain for future reference.

Remove all packaging and check contents for any damage prior to commencing installation. If there are any issues please contact our Customer Services Team on +44 (0) 1253 738311.

Before commencing installation and drilling into walls check that there are no hidden electrical cables or water pipes.

When using power tools always ensure you wear the correct PPE and operate following the manufacturer's instructions.

This dispenser should only be used for the type of paper towels specified, check outer box for details.

Product Features

Brushed and lacquered dispensers are manufactured from Stainless Steel.

White units are constructed from steel and powder coated.

Internal mechanisms are constructed from mixed materials.

Waste Bins can be floor standing without the need to fix to a wall. For added security or to raise the bin up from the floor to aid floor cleaning the units can be wall mounted. To wall mount please follow the installation instructions.

Fixing kits are included with all units.

Installation

Waste Bins with wall bracket

Following the guide for fixing; measure and mark the position of the wall bracket fixing holes on the wall ensuring that they are level.

Drill holes in the wall using the appropriate size drill bit. Drill to the depth of the wall plug. If the surface is tiled, drill into the grout lines whenever possible. Insert the wall plugs supplied.

Position the wall bracket over the fixing holes, insert the screws provided and tighten to secure the bracket. We always recommend that you use all fixing holes available for strength and security. Lift the waste bin on to the bracket.

For added security use the additional screw provided in the fixing kit to secure the bin to the bracket to prevent it from being lifted off.

Waste Bins without wall bracket

Following the guide for fixing; measure and mark the position of the fixing holes of the bin on the wall ensuring it is level.

Drill holes in the wall using the appropriate size drill bit. Drill to the depth of the wall plug. If the surface is tiled, drill into the grout lines whenever possible. Insert the wall plugs supplied.

Position the waste bin over the fixing holes, insert the screws provided and tighten to secure. We always recommend that you use all fixing holes available for strength and security.

Fitting a bin bag

Plastic Liner

Waste can be placed directly into units with a plastic liner. When emptying, tip the waste contents into a suitable waste bag and dispose of in line with your company's waste management policy. We recommend that the plastic liner is cleaned regularly with soap and water.

Alternatively you can place a bin bag in the plastic liner, securing the edges over and around the top of the liner.



Bag Straps

Lift the lid up, place the bin bag into the waste bin and secure the open edges around the hinged metal strap at the top of the bin. Once in position close the lid.



Open Top Units

Lift the lid off the unit, place the bin bag into the waste bin secured the open edges around the top of the bin and replace the lid.



General Maintenance & Cleaning

Brushed & Lacquered Stainless Steel Units:

Clean with warm water and a soft cloth, wipe in the same direction as the brushed grain. Dry thoroughly DO NOT use soap, chemical cleaning detergents or abrasive cleaners.

Powder Coated & Lacquered Units:

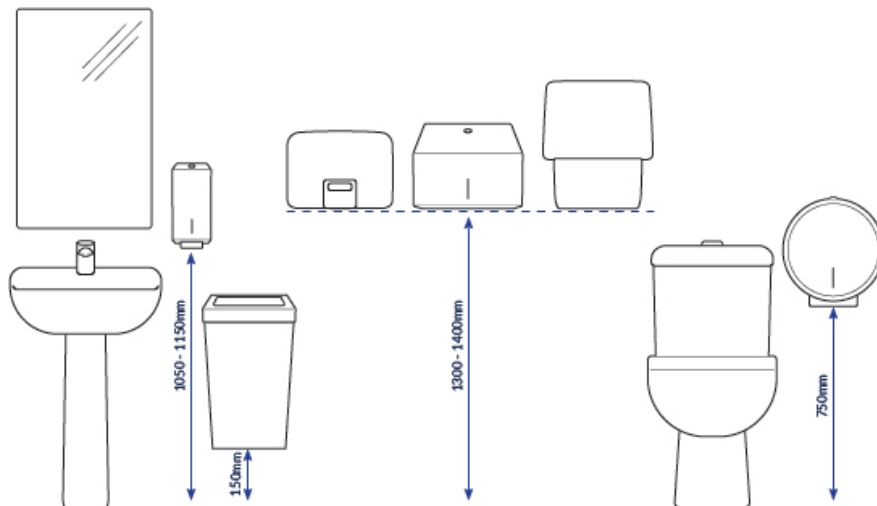
Clean with a mild detergent and soft cloth. Ensure any detergent is fully rinsed off prior to drying thoroughly.

End of Life Disposal

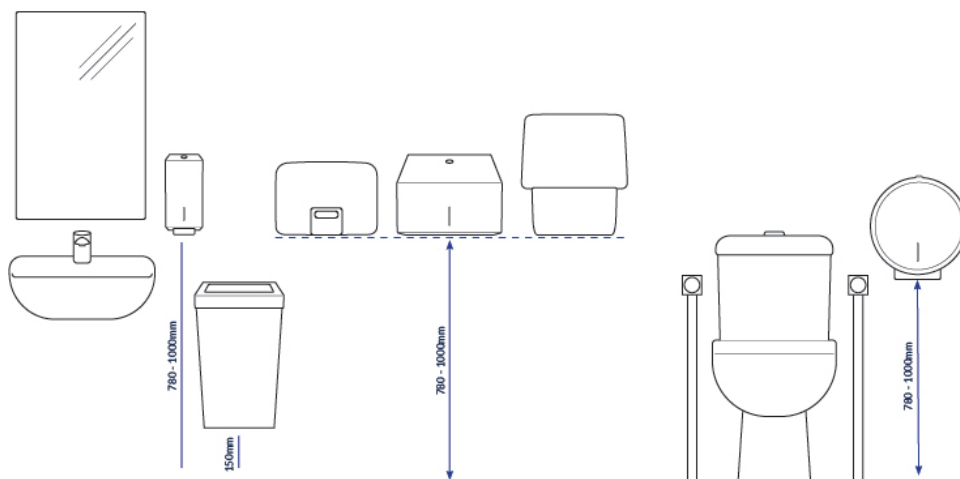
All Dudley Industries units are manufactured to ensure longevity and a reliable life span. When a dispenser has reached its end of life it should be disposed of in a safe manner. Most components can be re-cycled in accordance with your local authority waste management policy.

INSTALLATION HEIGHT GUIDE

General Washrooms:



Accessible Washrooms:



Dudley Industries Ltd
Preston Road, Lytham St Annes, Lancashire. FY8 5AT

Tel: +44 (0) 1253 738311
Email: sales@dudleyindustries.com
Web: www.dudleyindustries.com

