

Installation and User Guide

Toilet Paper Dispensers Jumbo | 2-Roll | 3-Roll | Multiflat

Applicable to product groups:

83700	Classic Jumbo Dispenser - Mini
83710	Classic Jumbo Dispenser - Midi
77384	Classic 3 Roll Dispenser
78417	Classic 2 Roll Dispenser
77974	Plasma 3 Roll Dispenser
77972	Plasma 2 Roll Dispenser
83650	Platinum Jumbo Dispenser - Midi
77019	Platinum 2 Roll Dispenser

PLEASE NOTE: this installation guide applies generally to the different types of toilet paper dispenser. Care should be taken to use the correct paper consumable specific to the dispenser type.



Thank you for choosing a Dudley Industries Toilet Roll Dispenser.

This dispenser is designed and manufactured by our team at our facilities based in Lancashire, UK. All our products are designed to withstand constant use in busy environments. Our Toilet Paper Dispensers are supported by a 10 year warranty provided they are installed and maintained correctly and not subject to any vandalism. Products must not be modified in any way as this will invalidate the warranty.

Please follow these instructions for safe installation and pass this document to the user for safe keeping.



Safety Information

Please read these instructions thoroughly before installation and retain for future reference.

Remove all packaging and check contents for any damage prior to commencing installation. If there are any issues please contact our Customer Services Team on +44 (0) 1253 738311.

Before commencing installation and drilling into walls check that there are no hidden electrical cables or water pipes.

When using power tools always ensure you wear the correct PPE and operate following the manufacturer's instructions.

This dispenser should only be used for the type of toilet paper specified, check outer box for details.

Product Features

Brushed and lacquered dispensers are manufactured from Stainless Steel.

White units are constructed from steel and powder coated.

Internal mechanisms are constructed from mixed materials.

All units are lockable to protect the contents and spare keys are available from Customer Services.

Viewing windows help to quickly identify the fill level.

Fixing kits are included with all units.

Installation

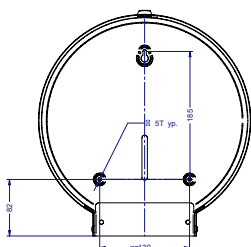
Following the guide for fixing; measure and mark the position of the fixing holes on the wall ensuring that they are level.

Drill holes in the wall using the appropriate size drill bit. Drill to the depth of the wall plug. If the surface is tiled, drill into the grout lines whenever possible. Insert the wall plugs supplied.

Open the dispenser and position the fixing holes over the wall holes made.

Insert the screws provided and tighten to secure the dispenser. We always recommend that you use all fixing holes available for strength and security.

Example:



Filling and refilling

Example products:

Unlock the cover and hinge open.

Jumbo Toilet Roll Dispensers

- If the toilet roll has a paper sleeve remove this first.
- Place the roll on the spindle.
- Release the first layer of paper and pull down so that it is visible below the unit.
- Close the cover.

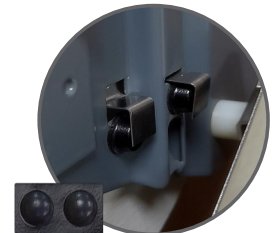


2 Roll Cored Dispensers (Pendimatic)

- These rolls are different to standard domestic rolls, they are rolled more tightly to allow for more paper per roll and the core will have plastic inserts at both ends.
- If the toilet roll has a paper sleeve remove this first.
- Position the roll so that the plastic ends are located with in the channels at the sides of the dispenser and drop into place.
- Repeat with the second roll. Pull the loose end of the paper from the first roll so that it is visible below the dispenser.
- Close the cover.
- When the first roll is fully used the core will drop out the bottom of the dispenser for disposal and the second roll will drop into place ready to be used.



If you find friction between the two rolls causes the paper to tear too easily, you can reduce the brake tension by placing the stoppers (included) under the levers as shown.



Multiflat / Bulk Fill Dispensers

- These dispensers use packs of single leaf toilet tissue.
- Remove the sleeve from the toilet tissue pack.
- Carefully place the stack of tissues into the dispenser.
- Close the cover.
- Ensure the first sheet of tissue is visible at the bottom of the dispenser.



3 Roll Dispensers

- Unless specifically stated otherwise these dispensers usually hold standard domestic toilet rolls.
- Place 3 rolls into the dispenser.
- Close the cover.
- Ensure the end of the first roll is visible below the unit



General Maintenance & Cleaning

Brushed Stainless Steel Units:

Clean with warm water and a soft cloth, wipe in the same direction as the brushed grain. Dry thoroughly DO NOT use soap, chemical cleaning detergents or abrasive cleaners.

Powder Coated & Lacquered Units:

Clean with a mild detergent and soft cloth. Ensure any detergent is fully rinsed off prior to drying thoroughly.

End of Life Disposal

All Dudley Industries units are manufactured to ensure longevity and a reliable life span. When a dispenser has reached its end of life it should be disposed of in a safe manner. Most components can be re-cycled in accordance with your local authority waste management policy.

Troubleshooting

Paper Towels not dispensing

Check that the correct size and type of toilet paper is being for the dispenser type.

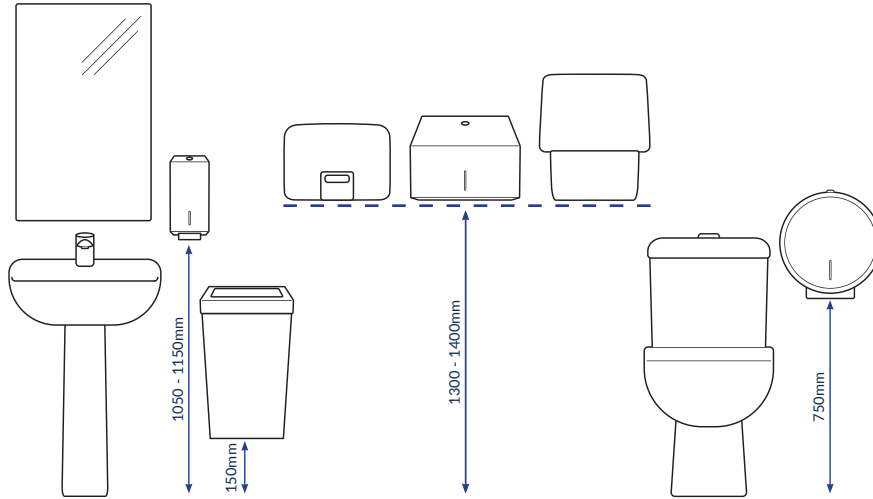
Check that the dispenser isn't overfilled. Squeezing in too much paper may cause a jam.

Lost Key:

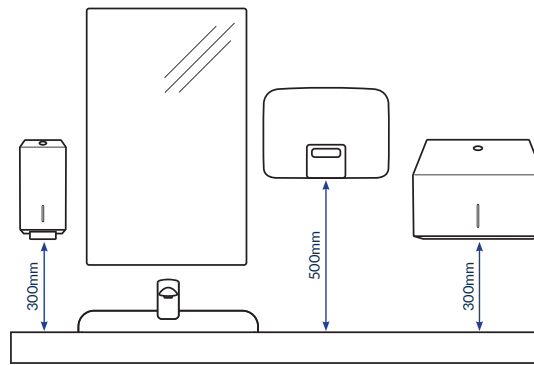
Spare keys can be purchased from our Customer Services Team call +44 (0) 1253 738311

INSTALLATION HEIGHT GUIDE

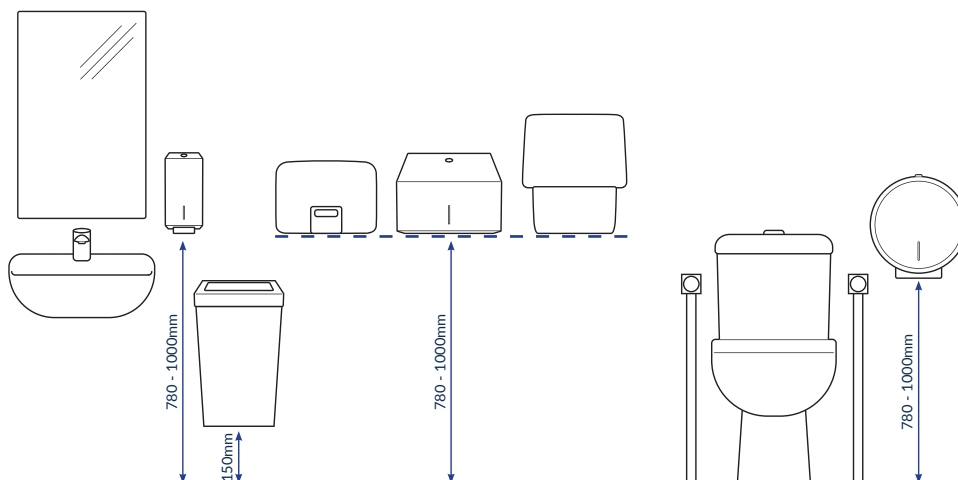
General Washrooms:



Above Counter:



Accessible Washrooms:



Dudley Industries Ltd
Preston Road, Lytham St Annes, Lancashire, FY8 5AT

Tel: +44 (0) 1253 738311
Email: sales@dudleyindustries.com
Web: www.dudleyindustries.com

