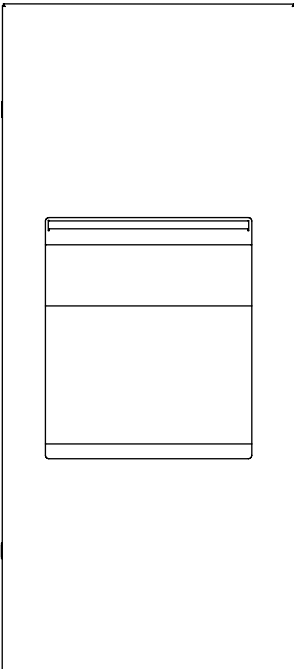


Technical Data Sheet

Recessed Range 5L Combination Recessed Unit

Applicable to products:

92364SS 5L Combination Recessed Unit Stainless Steel
92364BK 5L Combination Recessed Unit Black



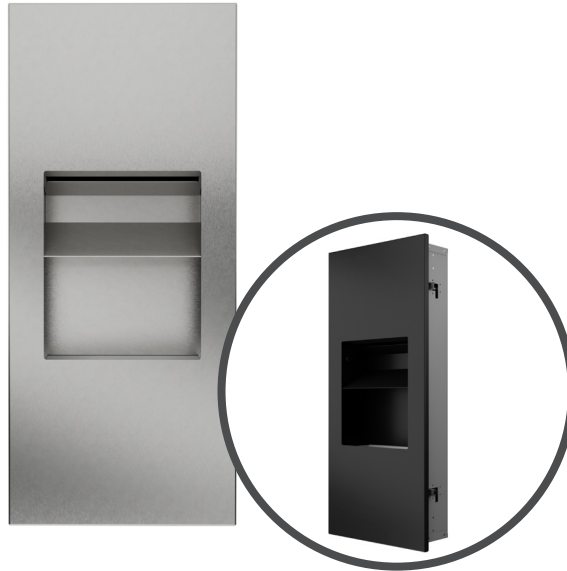
5L Combination Recessed Unit

92364SS Brushed Stainless Steel

92364BK Black Powder Coated

The 5 litre combination recessed unit is a sleek, stylish, and space-saving solution designed to enhance the modern washroom experience. By utilising the space available in wall cavities, this unit maximises the space available in the washroom, avoiding items protruding from walls to help maintain the aesthetic, whilst providing essential washroom services.

Product Image:



Product Description:

- A complete combination recessed unit.
- Provides an effective hand drying solution offering both paper towel dispenser and 5L waste bin.
- Available in both brushed stainless steel or black powder coated finishes to complement all washroom décors.
- Fits in a 100mm deep wall cavity to maintain the clean lines of washroom décor.

Available Finishes:

Brushed or powder coated black

Available for specification at:

Technical Data Sheet



5L Combination Recessed Unit

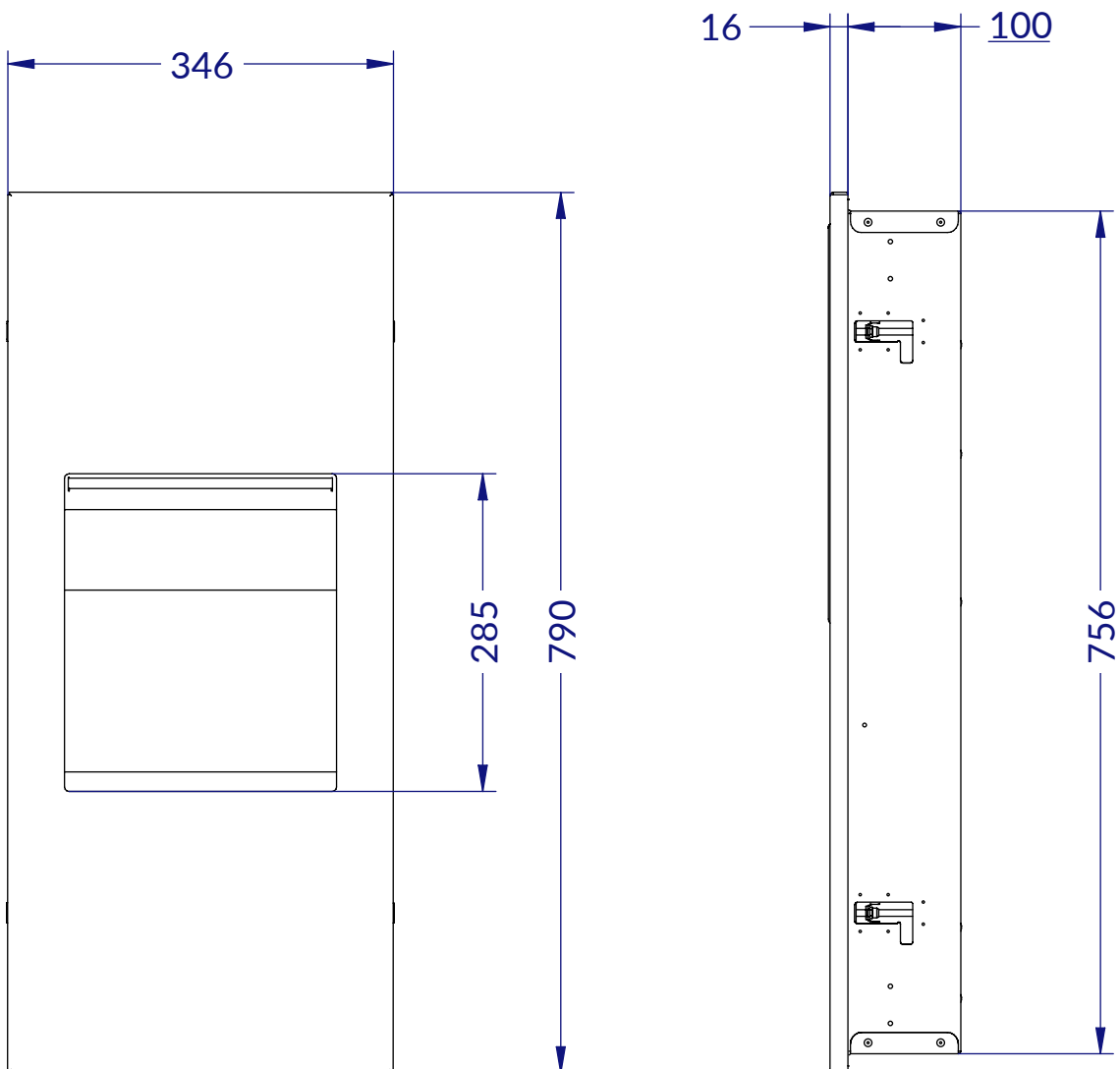
92364SS Brushed Stainless Steel

92364BK Black Powder Coated

Product Specification:

Material:	Stainless Steel
Dimensions:	W.346mm x H.790mm x D.116mm
Finish:	Brushed / Black Powder Coated
Warranty:	10 years

General Assembly:



Technical Data Sheet

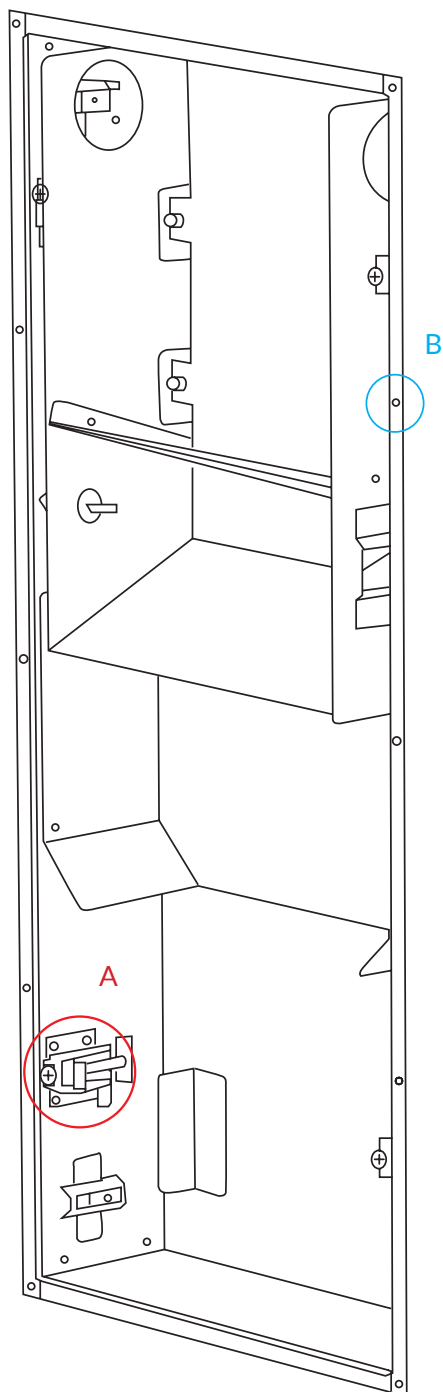
5L Combination Recessed Unit

92364SS Brushed Stainless Steel

92364BK Black Powder Coated



Fixing Holes:



Two methods of fixing:

- Panel Wall - use the 4 clamps built into the unit (image A).
- Noggin Frame - screw 10 appropriate size screws into the front flange (image B).

Dudley Industries Ltd
Preston Road, Lytham St Annes, Lancashire. FY8 5AT



Tel: +44 (0) 1253 738311
Email: sales@dudleyindustries.com
Web: www.dudleyindustries.com